



Figure 1. Soybean whitemold screening field plots (A) and soybean germination count (B), June 17<sup>th</sup> 2022.

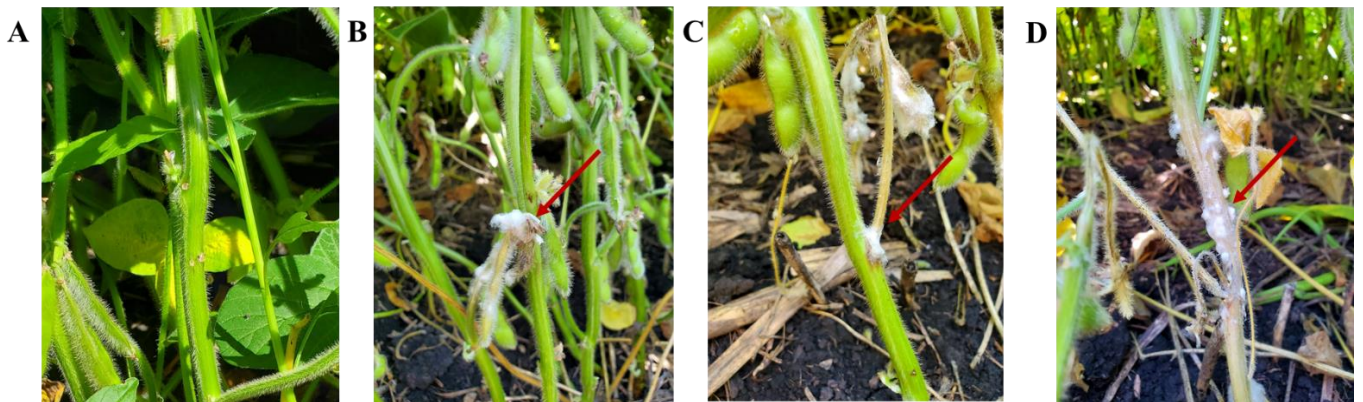
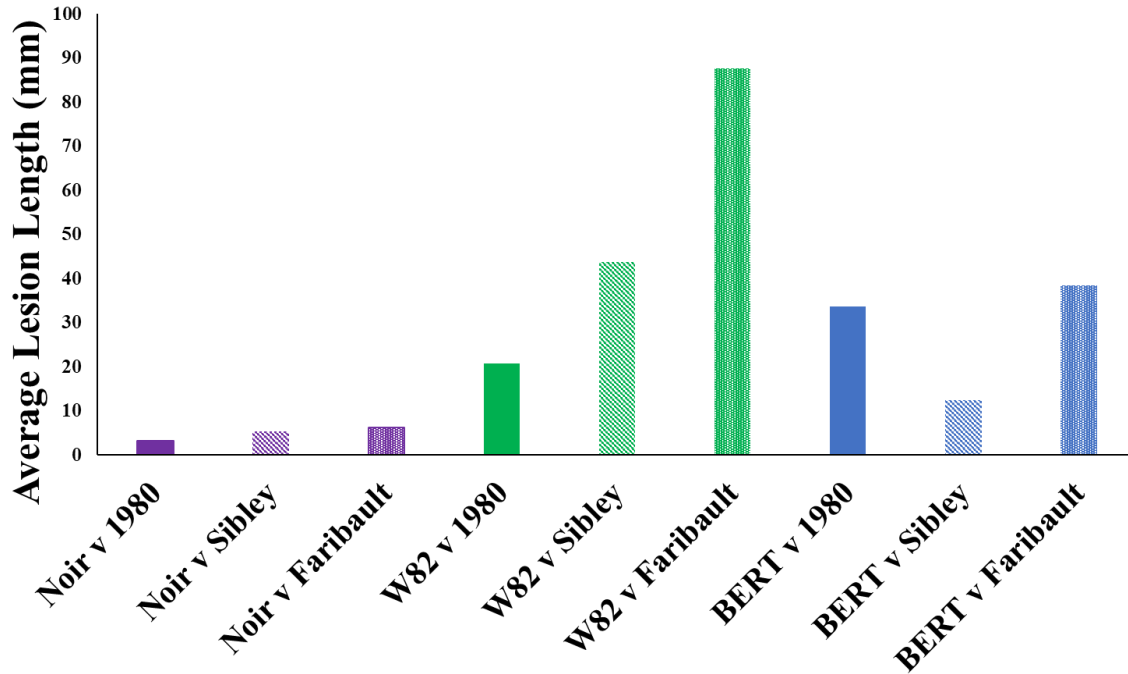
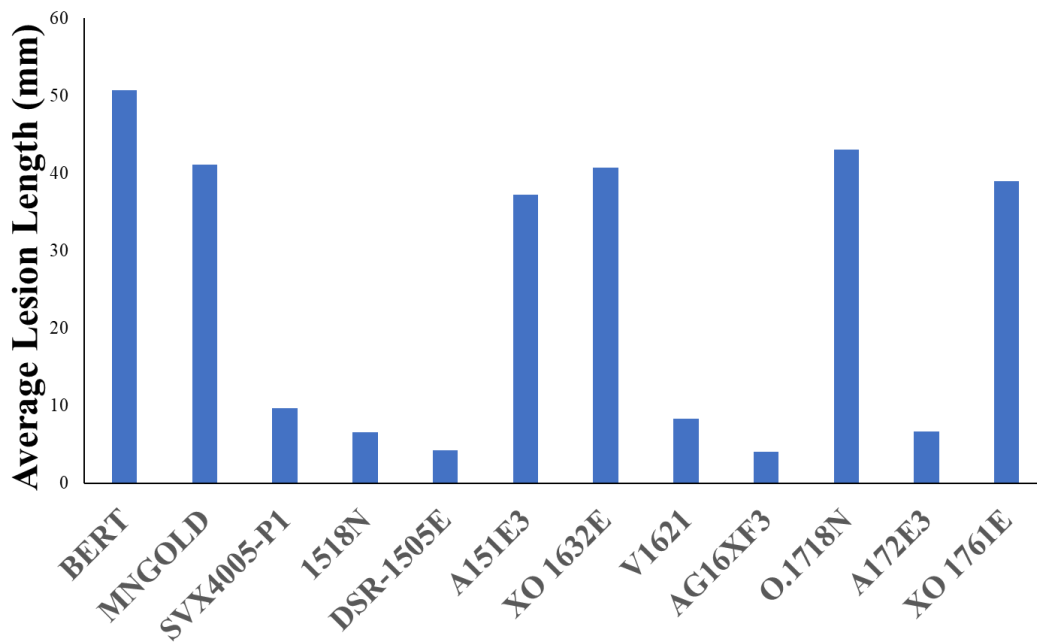


Figure 2. Disease severity (DS) seen in the plots, 25<sup>th</sup> August 2022. Disease severity scores, DS = 0 (No infection, A), DS = 1 (Infection on petiole, B), DS = 2 (Infection on Stem, C), DS = 3 (Gridiling of Stem, D). Red arrows indicates diseased sites.



**Figure 3.** Lesion length development in highly susceptible (William 82 and BERT), and highly resistant soybeans lines (Noir) following three different isolates of *S. sclerotiorum* (1980, Sibley and Faribault) 10 days post-inoculation (dpi).



**Figure 4.** Lesion length (mm, millimeters) development in 12 soybeans lines following *S. sclerotiorum* 10 days post-inoculation (dpi).