



Figure 1. Soybean white mold screening field plots (A) and soybean germination count (B), June 17th 2022.

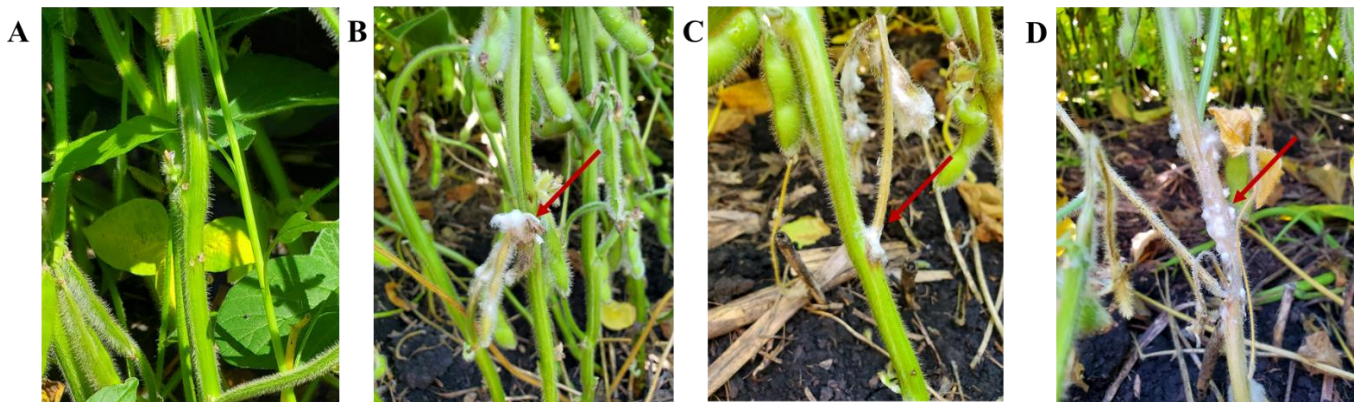


Figure 2. Disease severity (DS) seen in the plots, 25th August 2022. Disease severity scores, DS = 0 (No infection, A), DS = 1 (Infection on petiole, B), DS = 2 (Infection on Stem, C), DS = 3 (Gridiling of Stem, D). Red arrows indicate diseased sites.



Figure 3. White mold-infected field located in wells, Faribault county MN (9th September 2022).

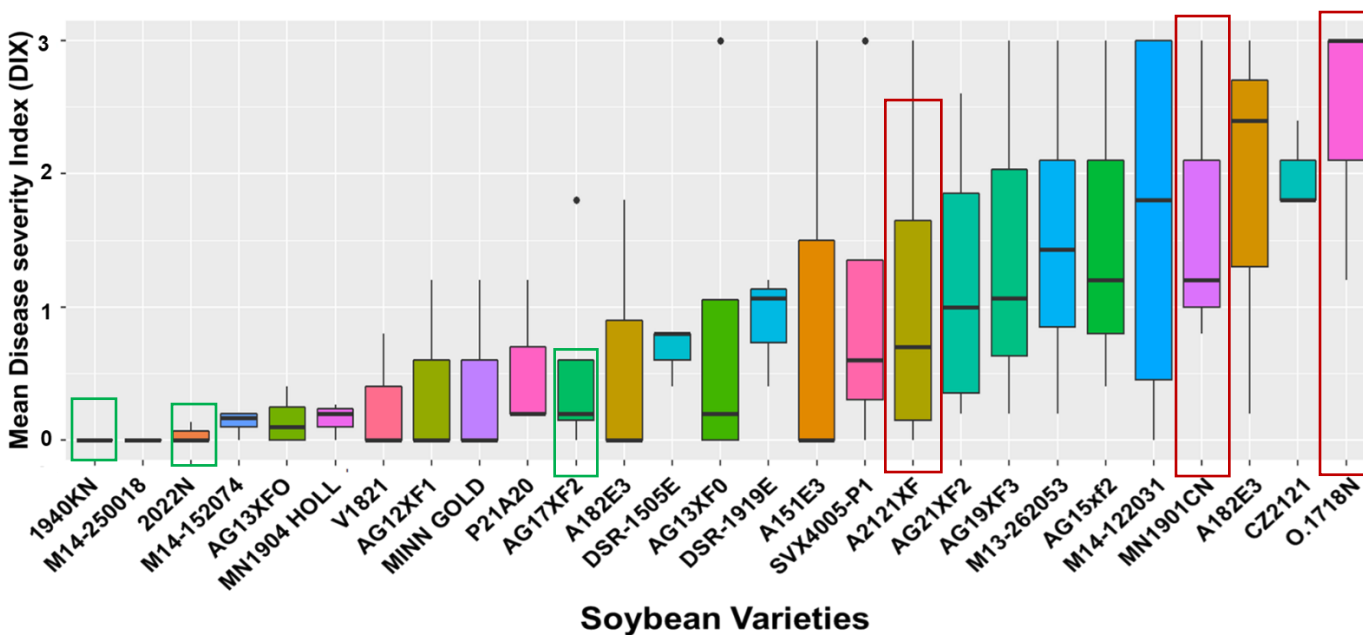


Figure 4. Mean disease severity index of 27 soybean varieties from the white mold-infected field DIX (on a scale of 0 to 3). DIX has been calculated from three or more than three replicated plots of each soybean variety. The Green and red rectangles represent common resistant and susceptible varieties found in the field and growth chamber experiments.

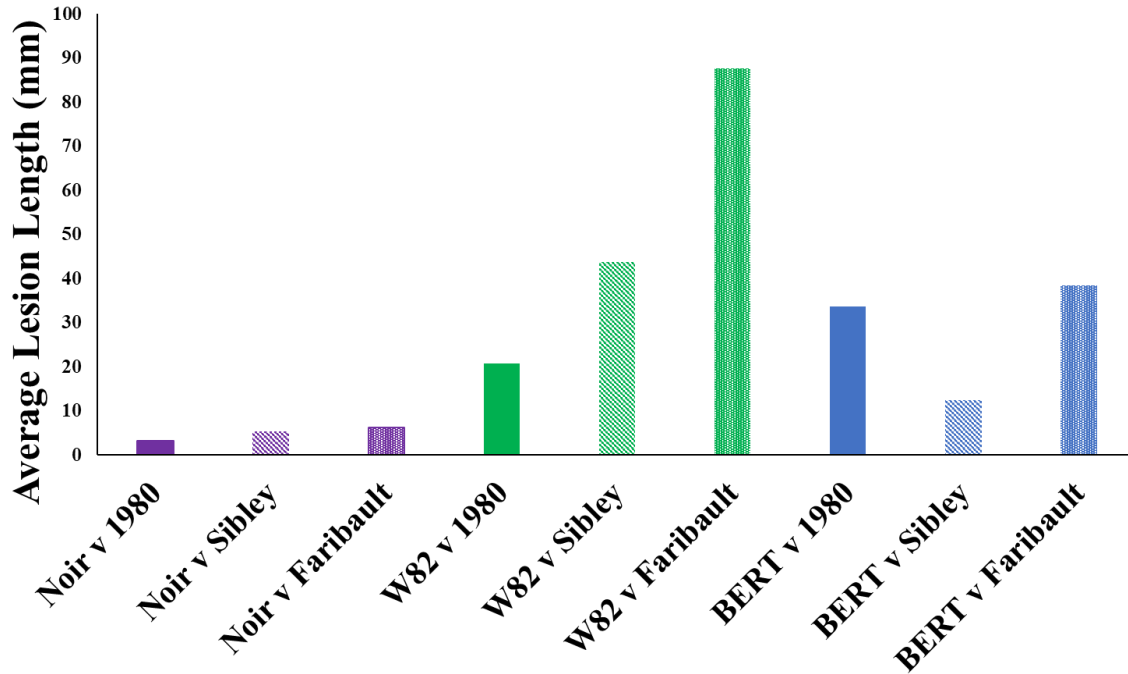


Figure 5. Lesion length development in highly susceptible (William 82 and BERT), and highly resistant soybeans lines (Noir) following three different isolates of *S. sclerotiorum* (1980, Sibley and Faribault) 10 days post-inoculation (dpi).

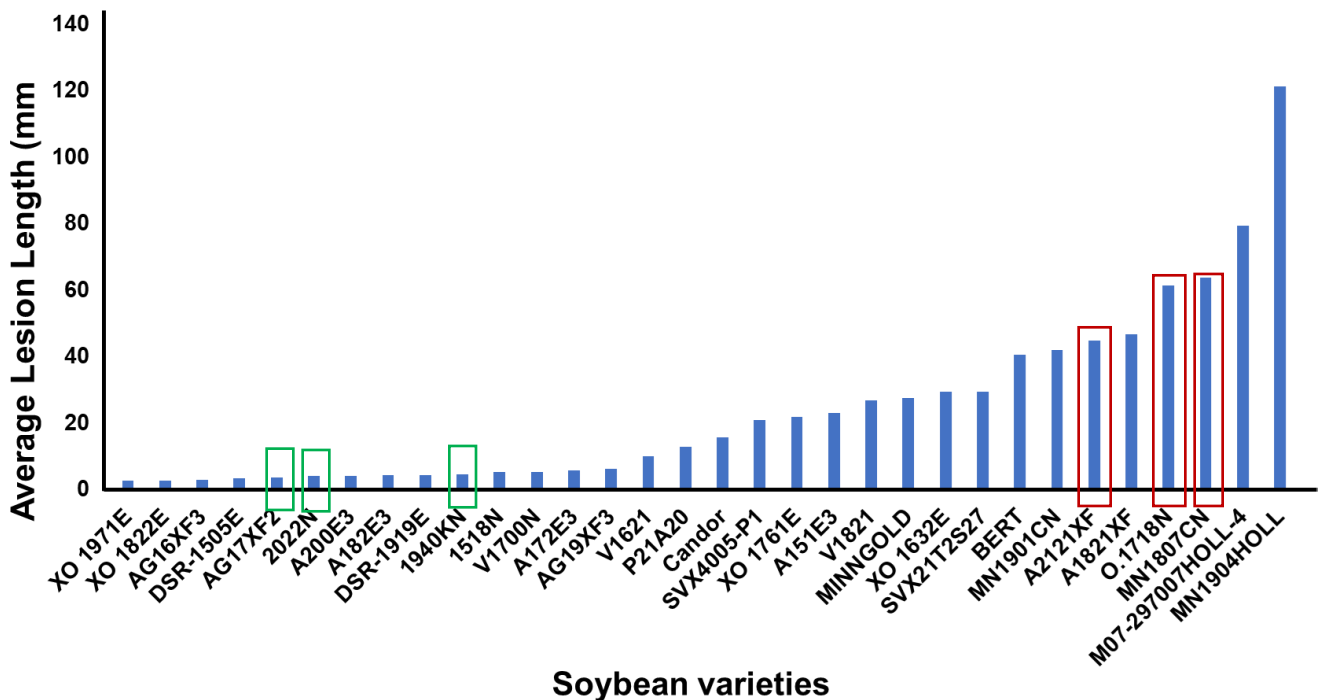


Figure 6. Lesion length (mm, millimeters) development in 32 soybeans lines following *S. sclerotiorum* ten days post-inoculation (dpi). The Green and red rectangles represent common resistant and susceptible varieties found in the field and growth chamber experiments.