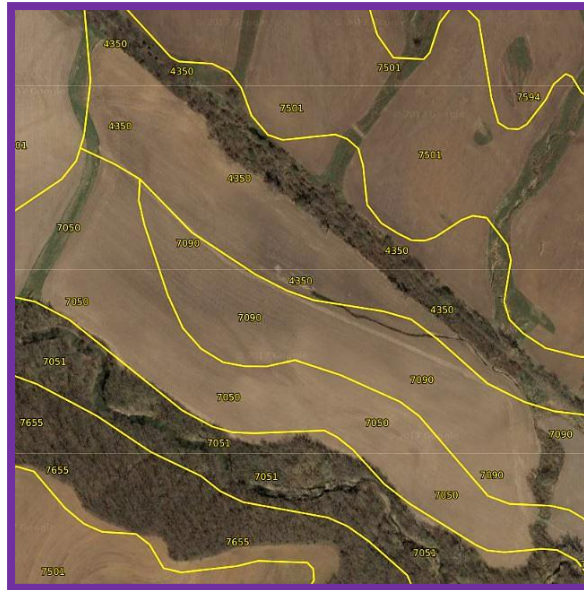
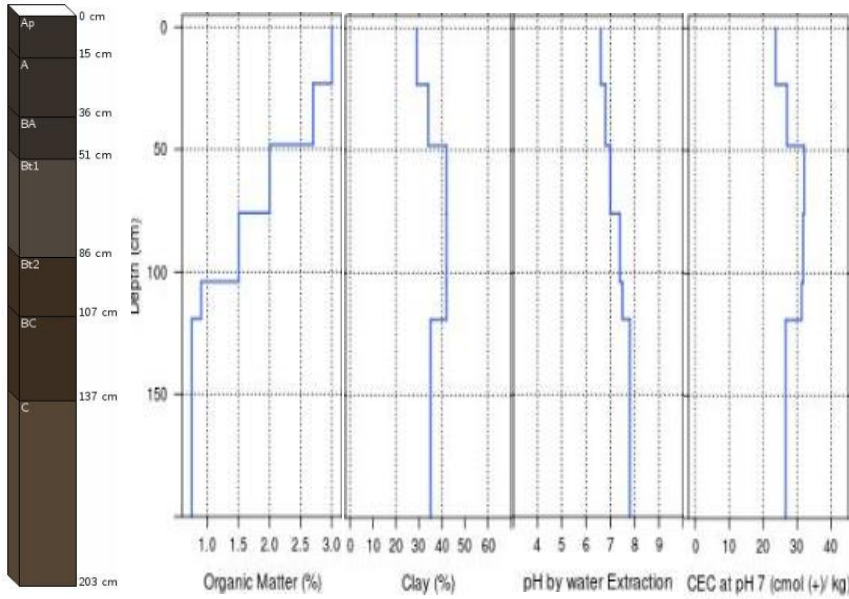


Muscotah

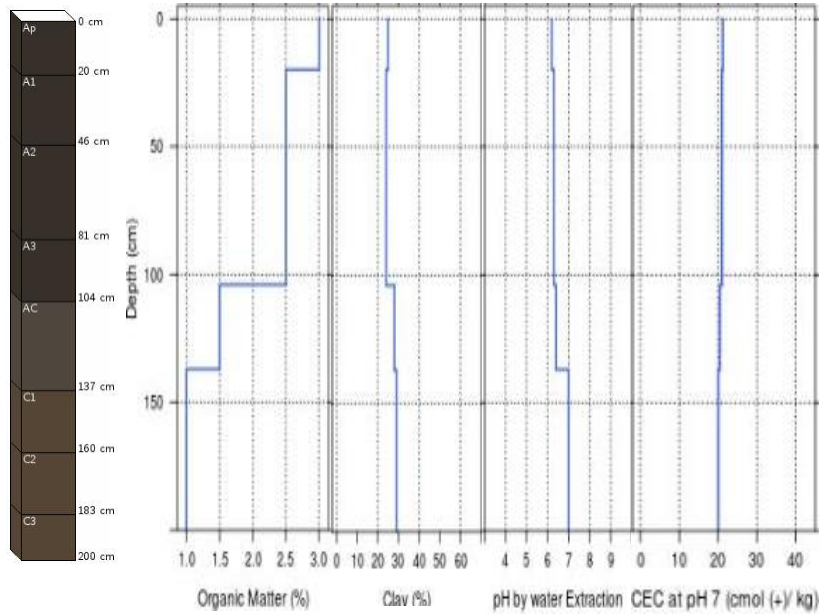


4350: Aquertic Argiudolls



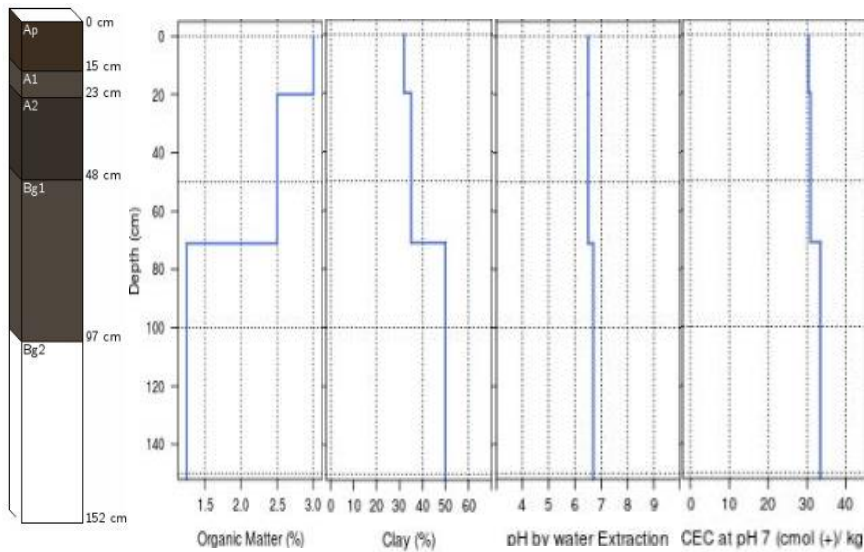
Wind Erodibility Group:	6
Wind Erodibility Index:	48
T Erosion Factor:	5
Runoff:	
Drainage:	Somewhat poorly drained
Hydric Rating:	No
Hydrologic Group:	Group D
Parent Material:	alluvium
Total Plant Available Water (cm):	30.99

7050: Cumulic Hapludoles



Wind Erodibility Group: 6
Wind Erodibility Index: 48
T Erosion Factor: 5
Runoff:
Drainage: Moderately well drained
Hydric Rating: No
Hydrologic Group: Group C
Parent Material: alluvium
Total Plant Available Water (cm): 48.41

7090: Vertic endoaquoll



Wind Erodibility Group: 6
Wind Erodibility Index: 48
T Erosion Factor: 5
Runoff: Very high
Drainage: Poorly drained
Hydric Rating: Yes (Wooded under natural conditions)
Hydrologic Group: Group D
Parent Material: clayey alluvium
Total Plant Available Water (cm): 24.43

SEASON 2017:

Crop: Corn

NDVI Satellite and UAV Data

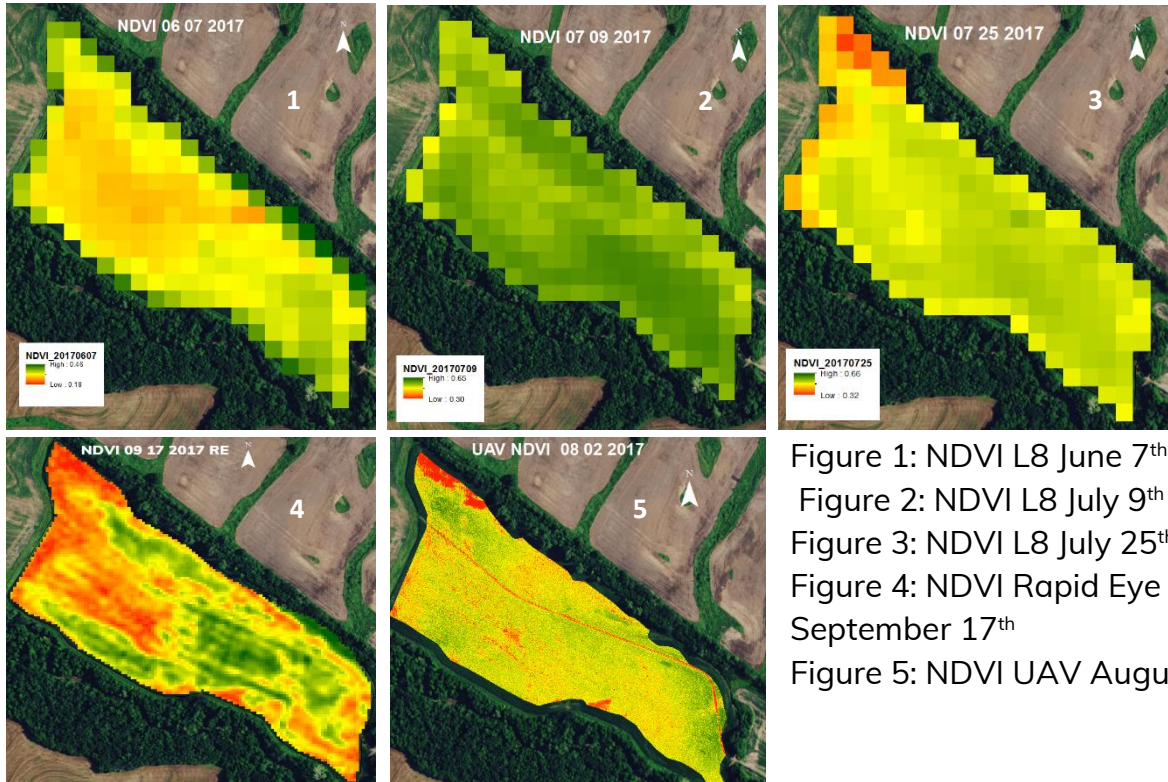


Figure 1: NDVI L8 June 7th
 Figure 2: NDVI L8 July 9th
 Figure 3: NDVI L8 July 25th
 Figure 4: NDVI Rapid Eye September 17th
 Figure 5: NDVI UAV August 2^{sd}

VOLUMETRIC WATER CONTENT:

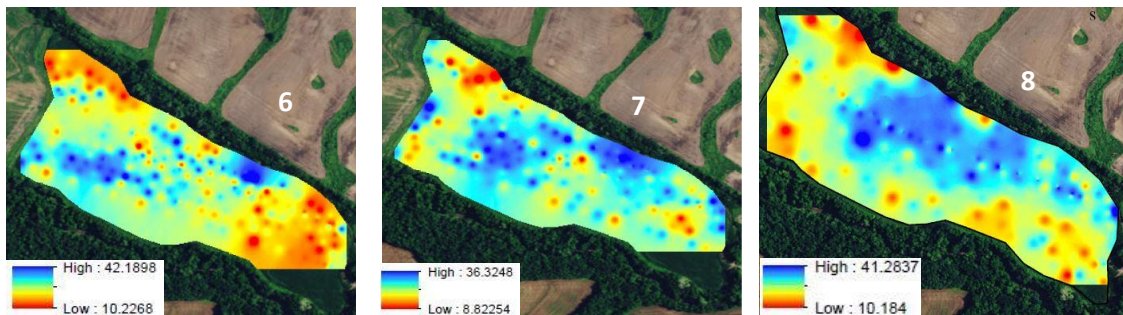


Figure 6: VWC 06-15-2017
 Figure 7: VWC 06-22-2017
 Figure 8: VWC 07-05-2017