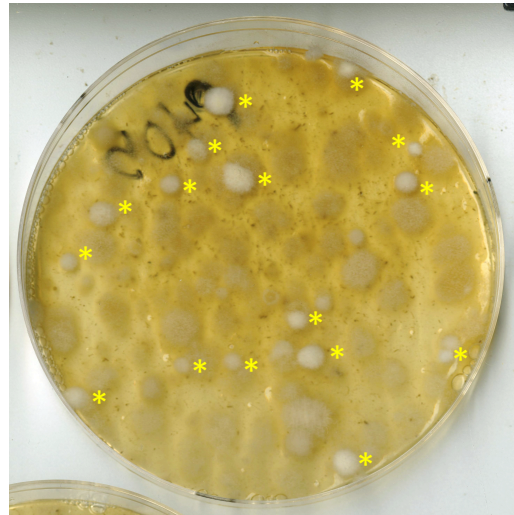
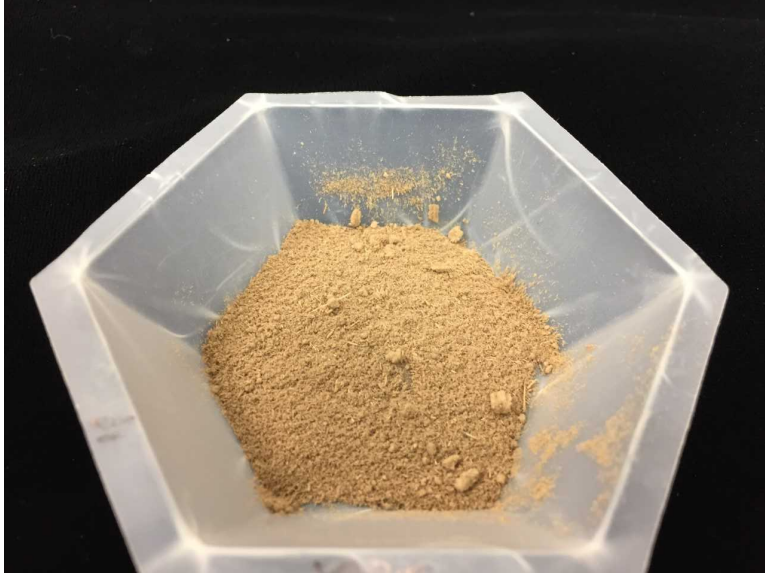


**Obj. 2.** Effect of ILeVO seed treatment on SDS and yield.

1. Later planting = Less SDS
2. Earlier planting = Overcomes SDS effect and improves long-term yield
3. Slight improvement in yield after ILeVO seed treatment, but not significant.

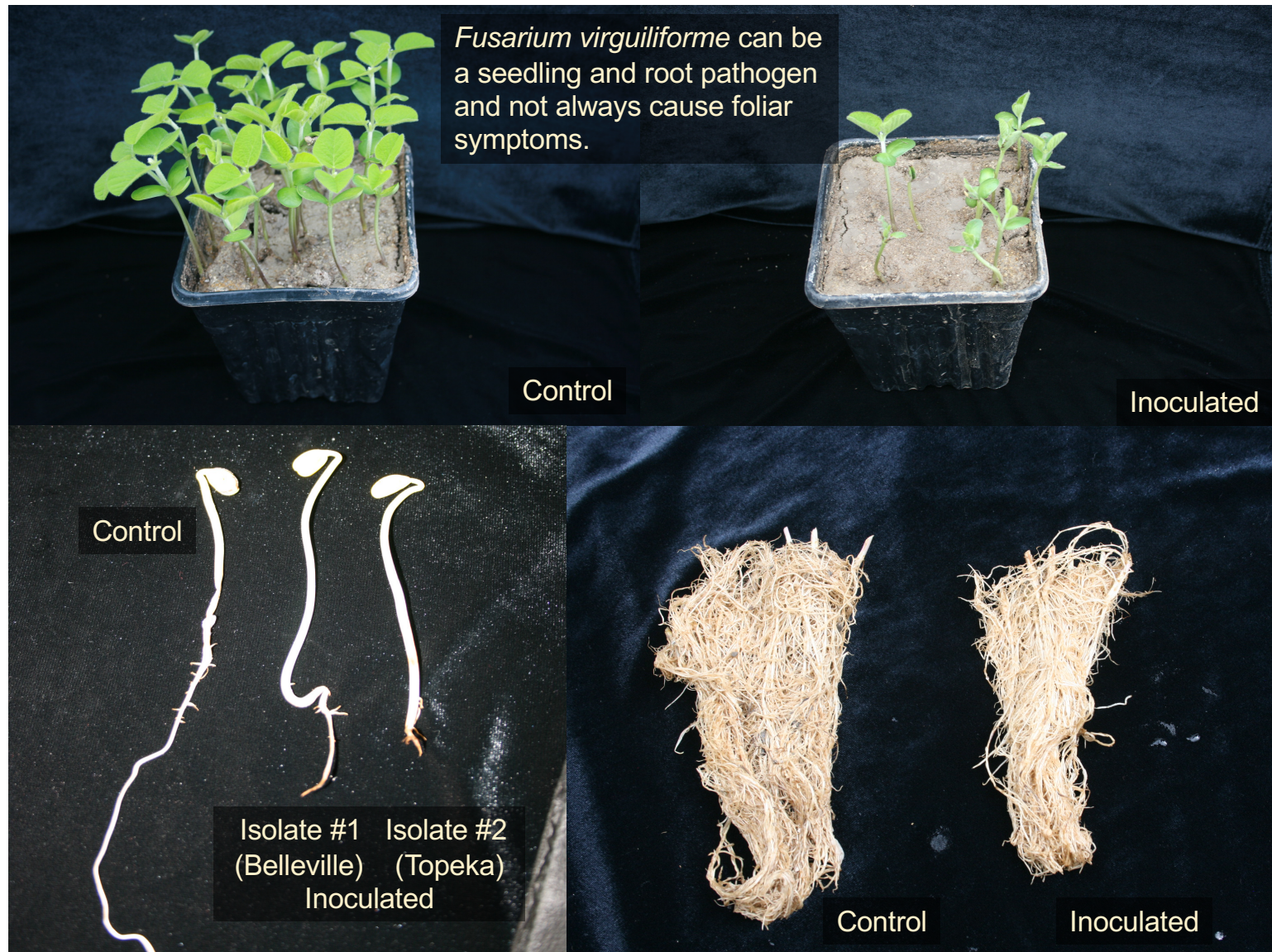


**Obj. 3.** Determine modes of residue and soilborne survival of the SDS pathogen in Kansas production fields.

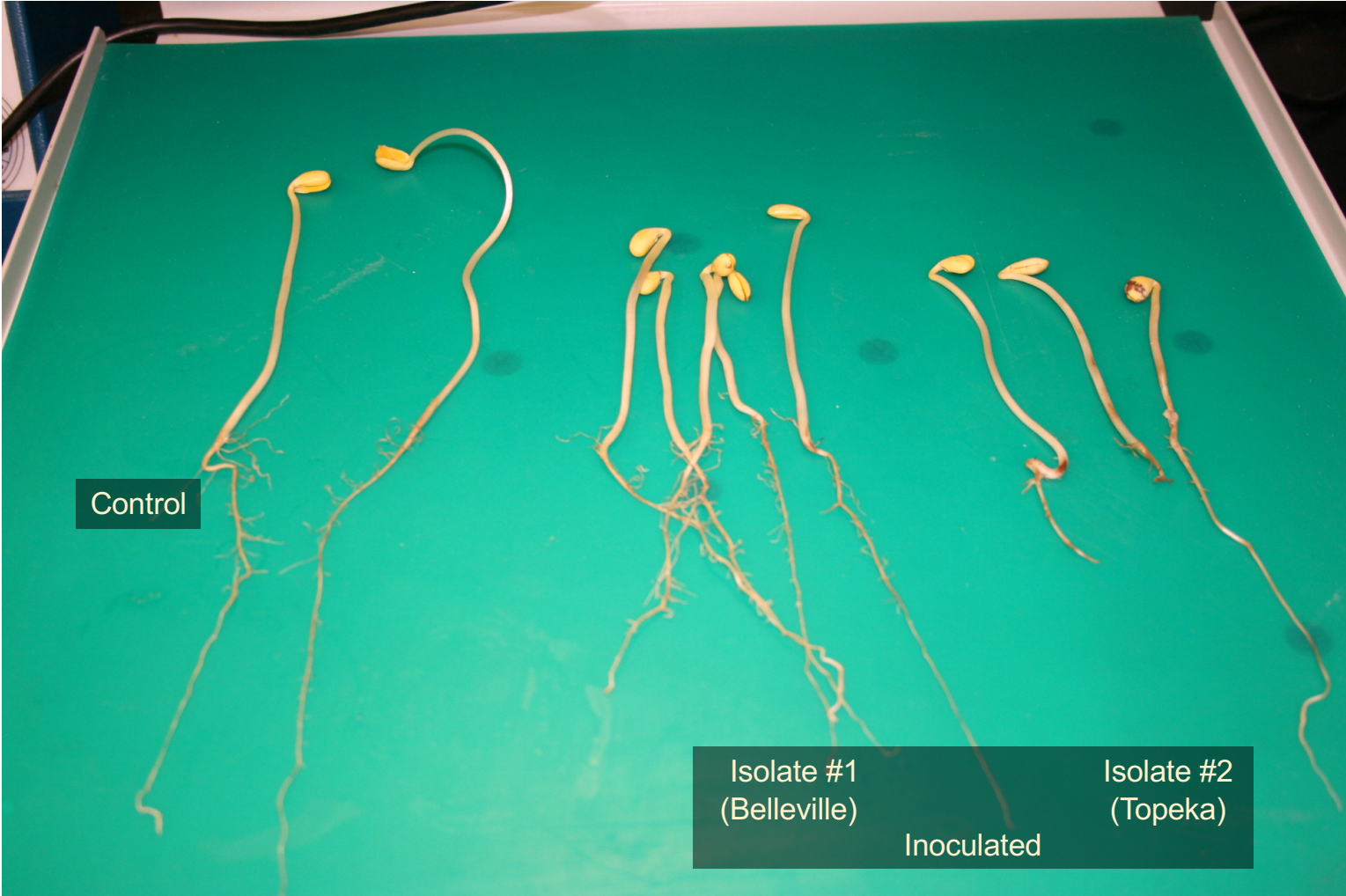
Corn residue processed for the presence of *F. virguliforme*. *F. solani*, related to FV, is present in corn residue (\*), which can be confused with FV. However, PCR shows that FV was not present in corn residue.



**Obj 4.** Determine pathogenic variability of *Fusarium virguliforme* isolates from multiple Kansas fields.







Control

Isolate #1  
(Belleville)

Inoculated

Isolate #2  
(Topeka)