

FIGURE 1. Yield gain conferred by a second fungicide application made 7, 10, 12, or 14 days after the first application in soybeans of 0.6, 0.9 and 1.1 maturity; Carrington and Oakes, ND (2020-21). Dots represent results from individual studies; bars represent average values. *Treatment averages followed by different letters are significantly different ($P < 0.05$).*

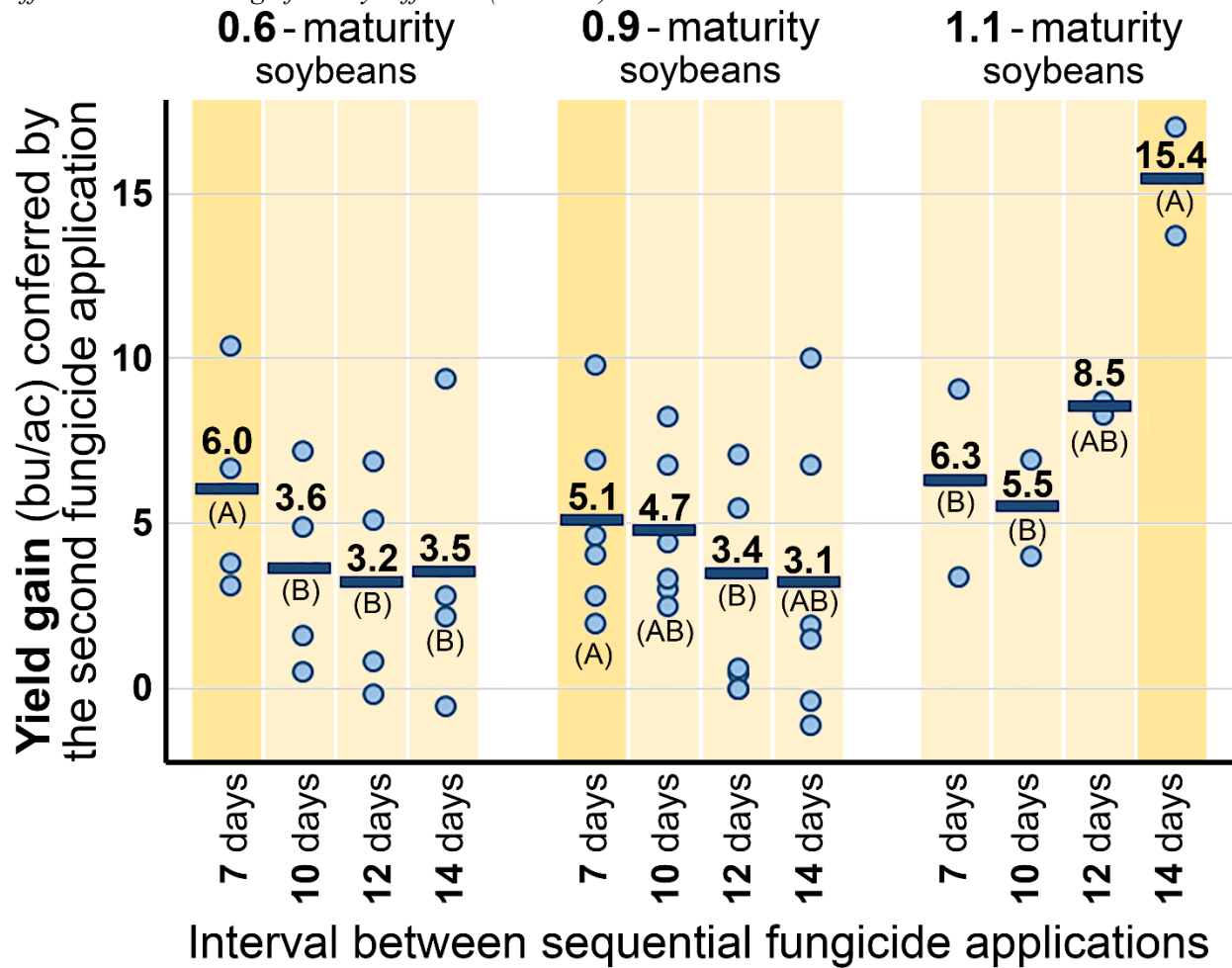


FIGURE 2. Comparative efficacy of a single application of Topsin (40 fl oz/ac) versus Endura (5.5 oz/ac) made at the R2 growth stage. The soybean canopy was at or near closure in all studies, and fungicides were applied with coarse droplets using TeeJet AIXR110015 nozzles at 50 psi. *Treatment averages followed by different letters are significantly different (P < 0.05).*

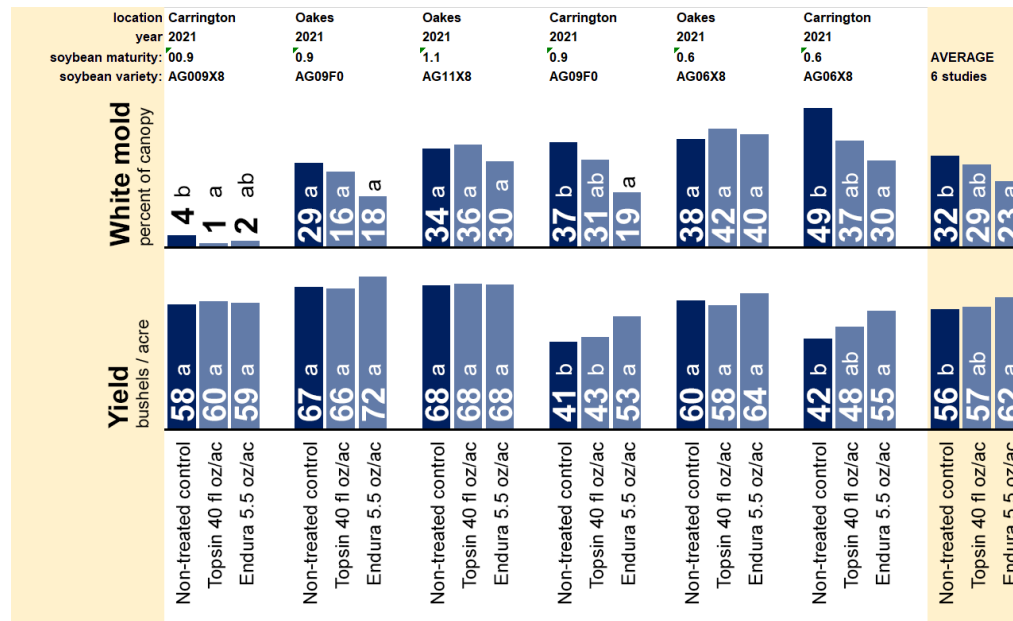


FIGURE 3. Comparative efficacy of sequential applications of Endura (5.5 oz/ac) vs. Topsin (40 fl oz/ac) followed by Endura (5.5 oz). Applications were made at the R2 growth and 7 days later (0.6-maturity and 0.9-maturity varieties) or 14 days later (1.1-maturity varieties). The soybean canopy was at or near closure in all applications, and fungicides were applied with coarse droplets using TeeJet AIXR110015 nozzles at 50 psi. *Treatment averages followed by different letters are significantly different (P < 0.05).*

