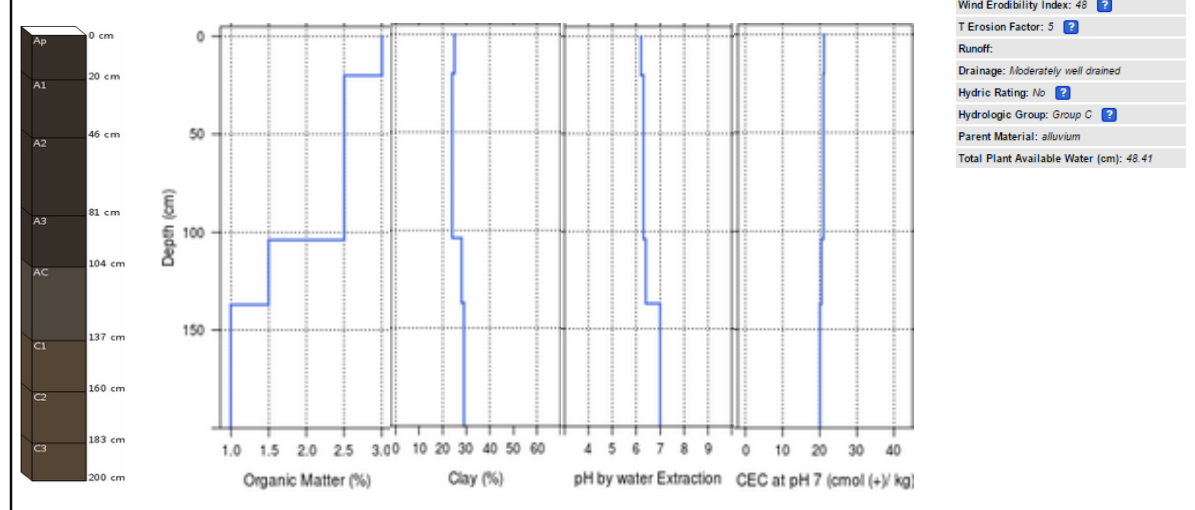


Muscotah Soybean

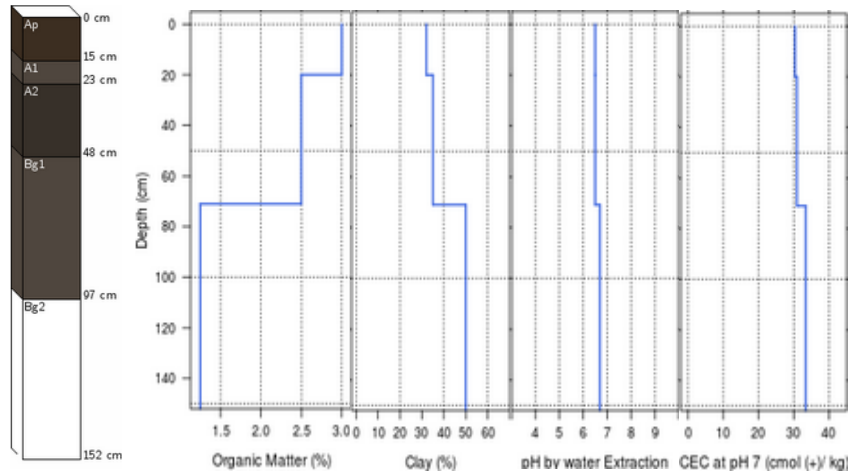
SSURGO



7050: Mollisols-Kennebec

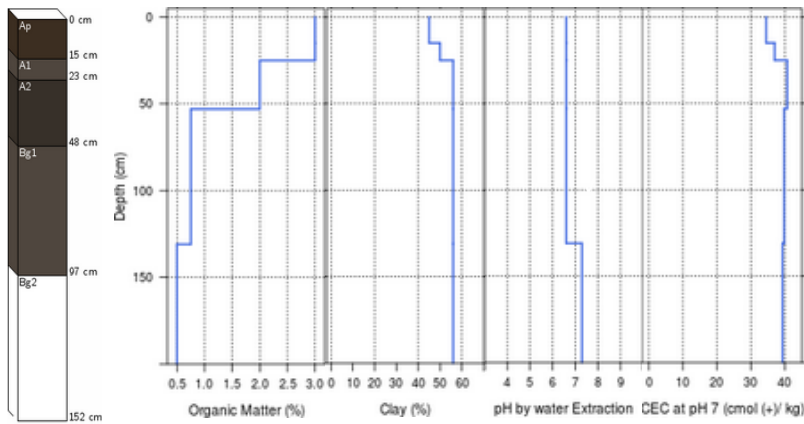


7090: Mollisols Wabash



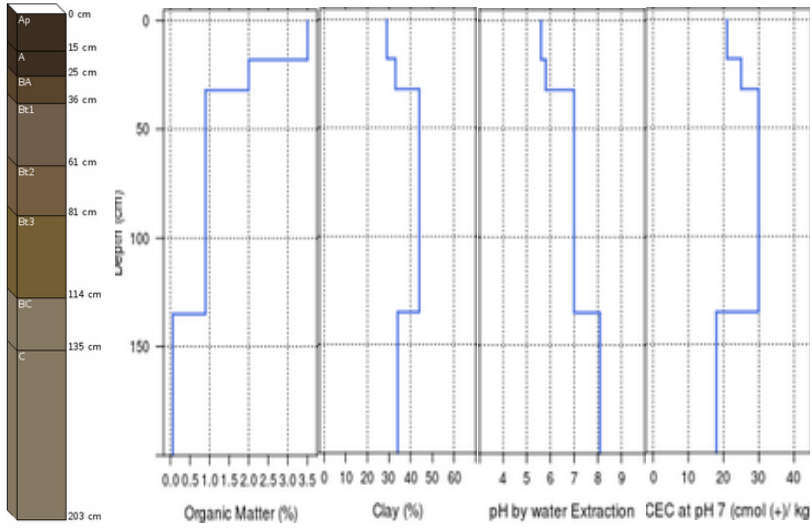
Wind Erodibility Group: 6
Wind Erodibility Index: 48
T Erosion Factor: 5
Runoff: Very high
Drainage: Poorly drained
Hydric Rating: Yes (Wooded under natural conditions)
Hydrologic Group: Group D
Parent Material: clayey alluvium
Total Plant Available Water (cm): 24.43

7091: Mollisols Wabash



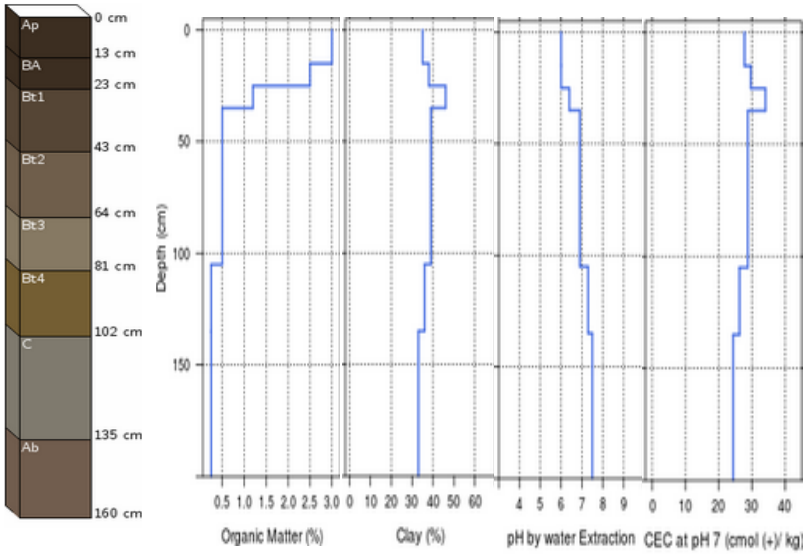
Wind Erodibility Group: 4
Wind Erodibility Index: 86
T Erosion Factor: 5
Runoff:
Drainage: Poorly drained
Hydric Rating: Yes (Wooded under natural conditions)
Hydrologic Group: Group D
Parent Material: alluvium
Total Plant Available Water (cm): 20.45

7501



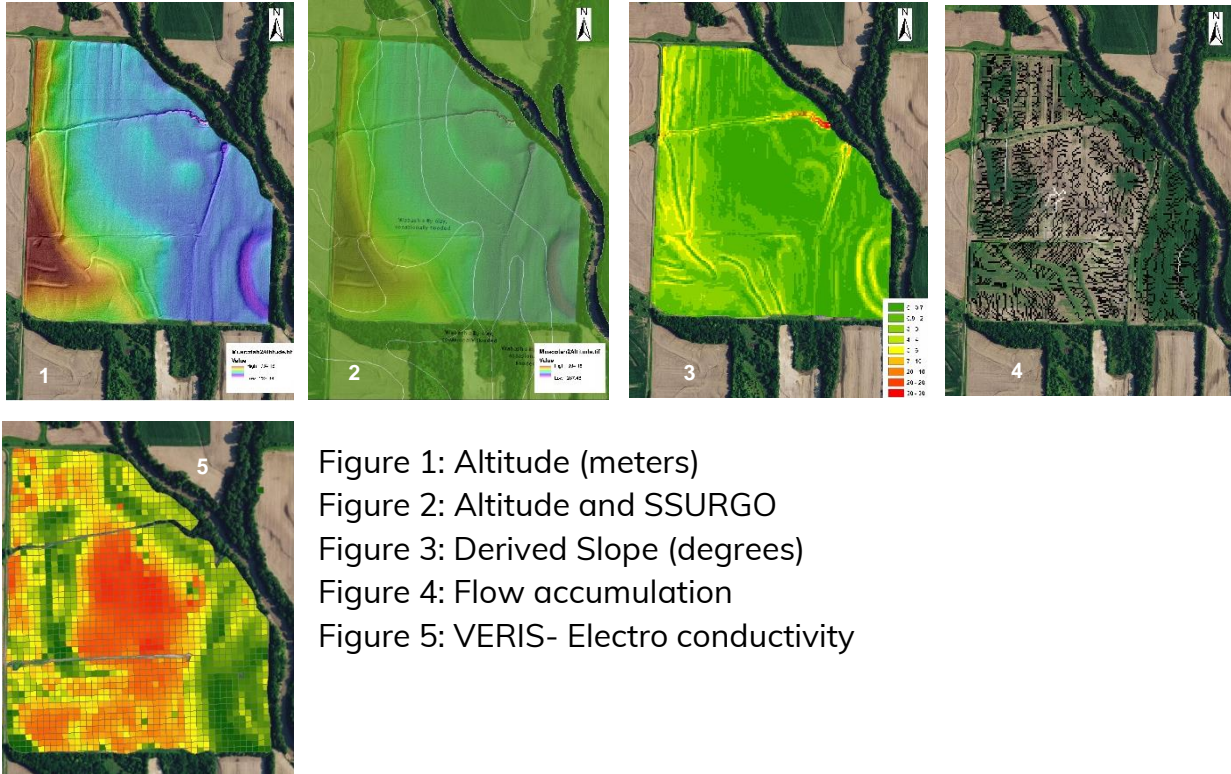
Wind Erodibility Group: 6
Wind Erodibility Index: 48
T Erosion Factor: 5
Runoff:
Drainage: Moderately well drained
Hydro Rating: No
Hydrologic Group: Group D
Parent Material: till
Total Plant Available Water (cm): 29.93

7683



Wind Erodibility Group: 6
Wind Erodibility Index: 48
T Erosion Factor: 5
Runoff: Medium
Drainage: Moderately well drained
Hydro Rating: No
Hydrologic Group: Group D
Parent Material: loess
Total Plant Available Water (cm): 35.95

Landscape characterization:



SATELLITE DATA ANALYSIS:

Summer crops 2015-2016

NDVI:

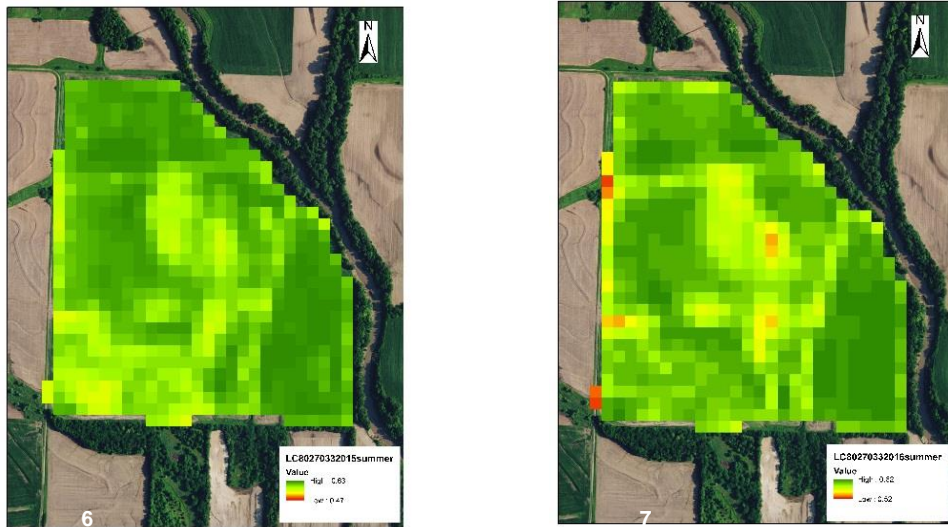


Figure 6: NDVI summer 2015

Figure 7: NDVI summer 2016

YIELD MONITOR CORN 2016



Figure 8: Corn Yield 2016

PRELIMINARY ZONING BY ISO-DATA CLUSTERING:



Figure 9: Low potential; High potential; Medium potential

SEASON 2017

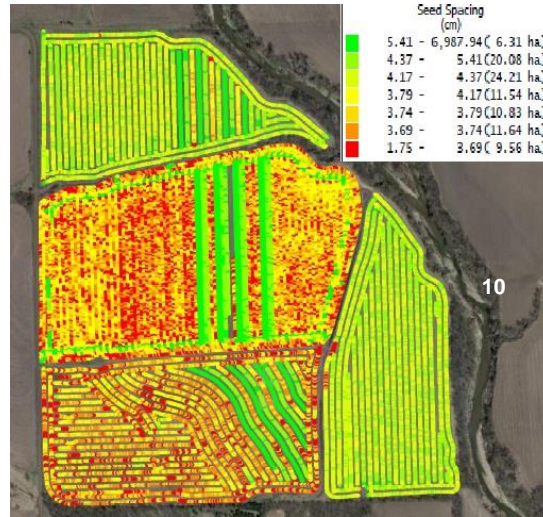


Figure 10: On Farm Soybean Strips 2017 and seeding space

Satellite imagery

NDVI:

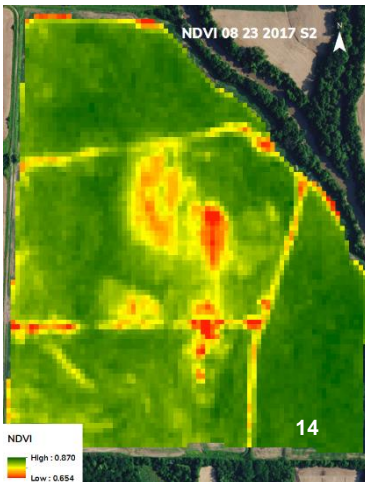
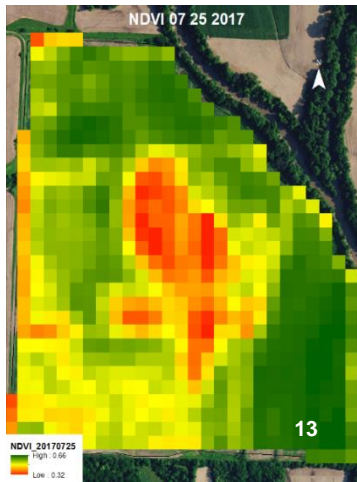
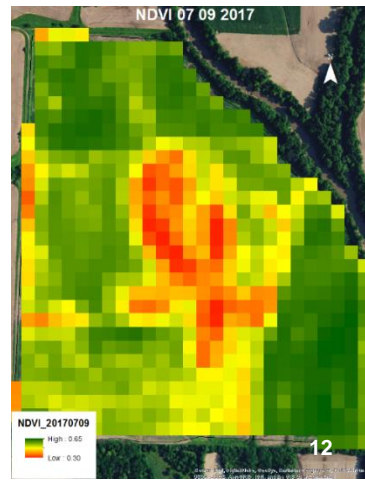
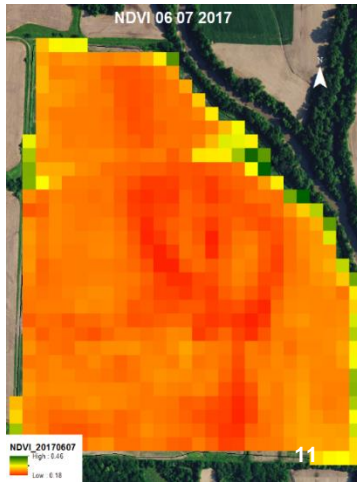


Figure 11: NDVI L8 June 7th
Figure 12: NDVI L8 July 9th
Figure 13: NDVI L8 July 25th
Figure 14: NDVI S2 August 23th
Figure 15: NDVI Rapid Eye September 17th

